

Contact Information

Indus Motor Company Limited

Plot No. N.W.Z./1/P-1, Port Qasim Authority, Karachi, Pakistan.

Phone: +92-21-34721100 UAN: +92-21-111-86-96-82 (+92-21-111-TOYOTA)

Customer Assistance Centre

Toll Free: 0800-11123

Email: customer.relations@toyota-indus.com

 ToyotaPakistanOfficial

 @ToyotaPak

 @ToyotaPak

 www.toyota-indus.com



AS VERSATILE
AS YOU...



Rush

August-2018

manhattan

Powered by Versatility



Ahead of every turn. The Versatile Wonder.

Defined by versatility, the new Toyota Rush exemplifies true beauty, luxury & style. With the ability to adapt, the all new Toyota Rush is a perfect fit for an active & dynamic lifestyle. On the road, you need a partner that adapts to various environments and always delivers more. A vehicle with versatility. A vehicle that inspires. That feeling is a Rush. That vehicle is the Rush.

220mm

High Ground Clearance

With an exceptional ground clearance of 220mm, the new Toyota Rush allows improved manoeuvrability on rough terrains and under diverse road conditions.



Chrome Front Grille

Seamlessly designed front chrome grille adds to the smart exterior of the car, giving it a wide, sharp and advanced image.



Stylish Alloy Rims

Sporting a unique combination of black painted and machined surface with turbine shaped rims to give the SUV a tough and dynamic look.

Headlamps

Equipped with the Daytime Running Lamp (DRL) technology, the perfectly designed LED headlamps add a stylish edge to the new Toyota Rush.



Chrome Covered Fog Lamps



Rear Combination Lamps

The futuristic look of the vehicle is enhanced by the use of rear LED lamps, designed in a sleek horizontal style to enhance characteristic graphics.

Rush



Push Start

Equipped with Push Start button for ease of use. Newly adopted smart entry and wireless door locking systems enhance convenience and control.



Push Start

Outside Rear View Mirrors (Electric & Retractable)



Rear Window Wiper



High Mount Stop Lamp
with Shark Fin Antenna



Roof Rail

Acing at Elegance



Steering Wheel with Switches



Dual Zone Auto AC

Power Connector



Rear Cooler

Speedometer

A large twin-meter fitted with chrome-plated rings, three-dimensional scales and contrasting day/night illumination for a sporty look & feel. High contrast luminescent liquid crystal display between the meters provides excellent visibility and readability.





Audio System

Built-in multimedia system, with 7-inch Capacitive Touch Screen, enables high resolution audio and video playback on multiple formats, with variety of inputs for an enriched multimedia experience. The audio system is equipped with Apple CarPlay and Android Auto, to make it easier for the driver to use apps from the phone, while on the road.



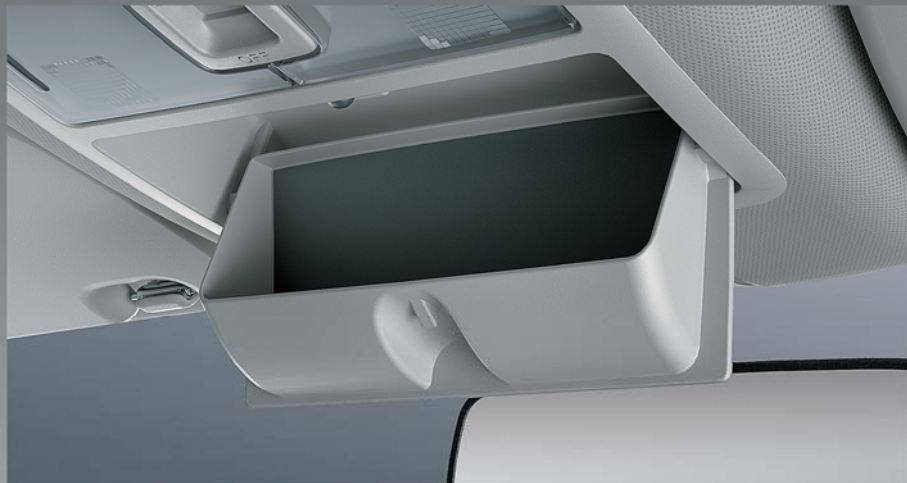
Cup Holders



Rear Door Pockets



Sunglasses Holder



Glove Box





Cabin Space

Expansive, stylish & comfortable, the new Toyota Rush is designed to accommodate more people and cargo with utmost ease and efficiency. Its wider seats and a roomy interior design makes every drive an absolute pleasure.





Powerful Engine

Driven by a powerful 1.5L in-line 4-cylinder petrol engine, with Dual Variable Valve Timing-intelligent (VVT-i) that provides optimum power and good fuel efficiency.





Front Engine,
Rear Wheel Drive

All Terrain SUV

Hill-start Assist Control maintains hydraulic pressure of the brakes, that prevents the vehicle from rolling backwards when starting off on a slope or uphill road.

Performance

The new Toyota Rush is designed with an exceptional Submersion Height of 60cm that allows the car to glide freely on every terrain with absolute ease & comfort.



Automatic Transmission

The 4 speed automatic transmission developed for the 2NR-VE engine ensures excellent power and fuel consumption. A high-level acceleration management system allows great control and smooth driving.

Manual Transmission

With an optimally tuned gear ratio, the 5 speed manual transmission delivers both, an outstanding fuel efficiency and the power for a comfortable drive, every time.

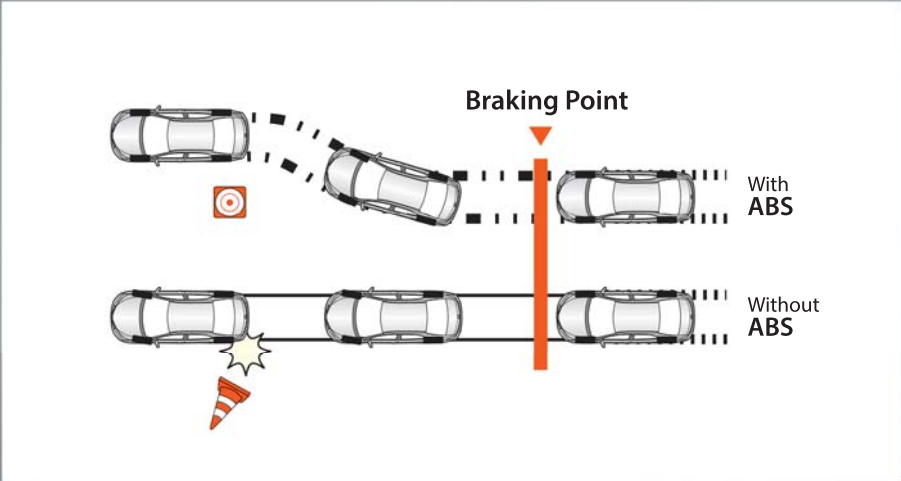
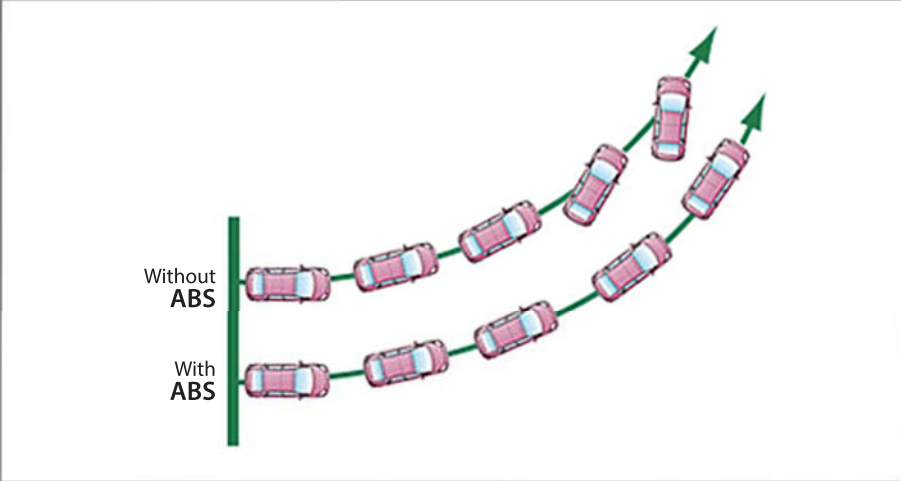
Minimum Turning Radius

Offering excellent manoeuvrability due to its Front Engine, Rear Wheel Drive layout, the new Toyota Rush swiftly glides through narrow spaces despite its large body size.

5.2m

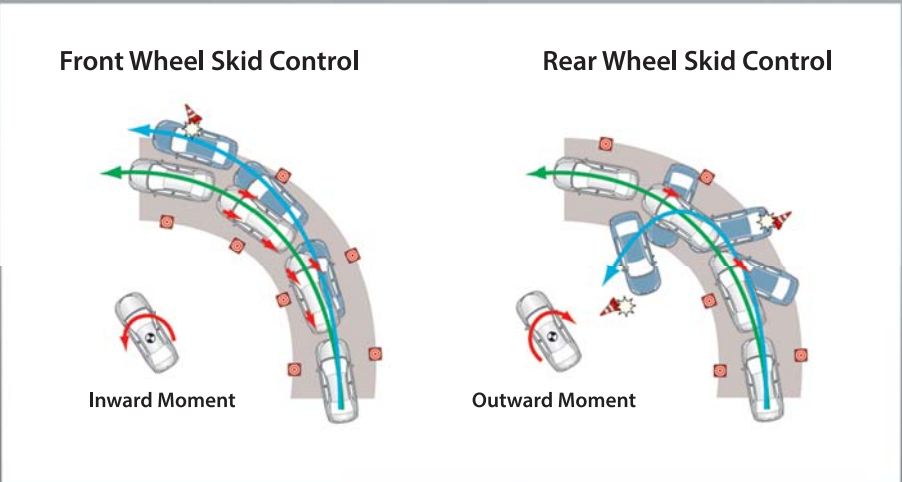
An aerial photograph of a roundabout in a city. A white van is positioned at the bottom of the frame, entering the roundabout. A large white arrow on the road surface indicates a counter-clockwise turning path. A diagram is overlaid on the image, showing a circle with a radius of 5.2m. The diagram consists of a central point with a small circle around it, and a larger circle with a radius line extending from the center to the outer circle. The radius is labeled '5.2m' in a white box. The roundabout has a central landscaped area with green plants and colorful flowers. The surrounding area includes sidewalks, trees, and buildings.

Traction Control (TRC)



Anti-lock Braking System with Electronic Brake-force Distribution

Emergency Signal System (ESS)



Vehicle Stability Control (VSC)

Clearance Sonar & Rear Camera

Advanced warning of obstacles at the rear when reversing. The clearance sonar uses ultrasonic sensors to detect obstacles at the rear. A buzzer informs the driver of the distance between the vehicle and obstacle. The rear camera aids the driver in view-ability while reversing.



Rear Camera

SRS Airbags

Equipped with a 6 SRS airbag system that ensures a high level of passenger safety. Front airbags, Curtain shield airbags and Front side airbags are installed to enhance occupants' protection.





Without Control
Vehicle rolls backwards

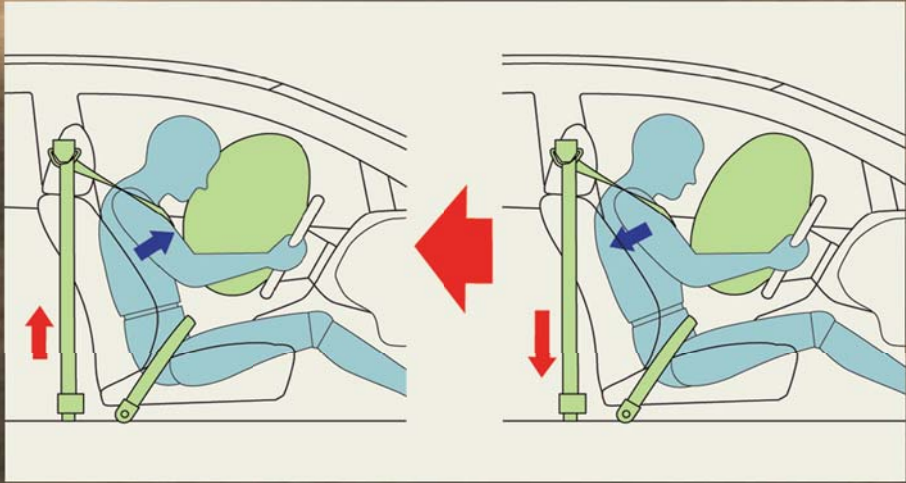


With Control
Suppresses backward movement

ISOFIX Child Seat Anchors



GOA Body with Reinforcements



Front Seat Belts: 3-Point ELR
with Pretensioner and Force Limiter



Seat Belt Reminder



Brilliance in Every Style

Experience the grandeur of the new Toyota Rush in all its glory. With a range of styles, fittings and components, it is here to inspire.



Polyurethane Steering Wheel



16-inch Alloy Rims



Silver Chrome Grille



Leather Steering Wheel



Smoked Chrome Grille



17-inch Alloy Rims

Colour Range

The new Toyota Rush is available in 6 striking colour hues to suit your style.



Specifications*

		G MT	G AT	S AT
		F800RE-GMMF	F800RE-GQMF	F800RE-GQGF
Dimensions				
Overall	Length (mm)	4435		
	Width (mm)	1695		
	Height (mm)	1705		
Wheelbase		2685		
Tread	Front (mm)	1445		
	Rear (mm)	1460		
Overhang	Front (mm)	740		
	Rear (mm)	1010		
Min. Running Ground Clearance	(mm)	220		
Approach Angle		31.1°		
Departure Angle		26.5°		
Interior	Length (mm)	2490		
	Width (mm)	1415		
	Height (mm)	1195		
Seating Capacity	Persons	7		
Gross Vehide Weight	(kg)	1870		
Curb Weight	(kg)	1290		
Towing Capacity	w/o Brake (kg)	750		
Fuel Tank Capacity	(L)	45		
Engine				
Engine Model Code		2NR-VE		
No. of Cyls.		4		
Cylinder Arrangement		In-Line		
Bore	(mm)	72.5		
Stroke	(mm)	90.6		
Displacement	(cm³)	1496		
Compression Ratio		11.5 : 1		
Ignition System		Electronic		
Fuel System		SFI		
Fuel Type		Petrol		
Max. Output	(kW)	77		
	(rpm)	6000		
	(Nm)	136		
Max. Torque	(rpm min.)	4200		
		Euro 2		
Emission Certification				
Performance				
Min. Turning Radius	Tire (m)	5.2		
	Body (m)	5.7		
Transmission	Type	5 M/T	E-4 A/T	
Brake Type	Front	Ventilated Disc		
	Rear	Drum		
Suspension Type	Front	Macpherson		
	Rear	Axle Type w/ 5-Link		
Stabilizer Bar	Front	Torsion Bar (Standard)		
	Rear	Torsion Bar (Standard)		
Steering Wheel	Gear Type	Rack & Pinion		
	Column	Collapsible with Tilt		
Power Steering Type		Electric Power Steering		
Sizes	Wheels	16 x 6.5J	17 x 6.5J	
	Tires	215/65R16 98S	215/60R17 96H	
Exterior				
Headlamps		LED with Silver Ornament		LED with Smoke Ornament
Front Fog and Driving Lamps		With Chrome Bezel		With Smoked Chrome Bezel
Light Control System		x	Auto Light Control	
Rear Combination Lamps		LED		
Back Up Lamp		o		
High Mount Stop Lamp		With LED		
Side Turn Signal Lamps		With Outside Rear View Mirrors		
Reflex Reflector		o		

		G MT	G AT	S AT
		F800RE-GMMF	F800RE-GQMF	F800RE-GQGF
Exterior				
Front Grille		Chrome		Smoked Chrome
Rear Spoiler		o		
Air Spats		With Front and Rear		
Roof Rail		o		
Power Door Lock		With Auto Door Lock		
Wireless/Smart Door Lock		Wireless Entry	Smart Entry	
Push Start		o		
Outside Rear View Mirrors		Electric (Body Colour)	Electric and Retractable (Body Colour)	
Door Outside Handles		Paint	Paint with Lock Switch	
Rear Door Outside Handle		Electric Latch	Electric Latch with Switch	
Windshield Wipers		Aero Type with Intermittent Wipers		
Rear Window Wiper		o		
Antenna		Shark Fin		
Towing Hooks		Front and Rear		
Interior				
Air Conditioner		Dual Zone Auto AC with Rear Cooler		
Heater		o		
Rear Window Defogger		o		
Steering Wheel		Urethane	Leather	
Steering Switches		Audio	Audio + Telephone	
Speedometer		Colour with Chrome Ring		
Multi Information Display		LCD with Segment Colour		
Audio		7-inch Capacitive Touch Screen with DVD, USB, MP3, Bluetooth and Wifi, Apple CarPlay & Android Auto via USB Connection and Built-in "Air Mirroring via Wifi"		
Speakers		6	8	
Seats	Front Seat	Separate		
	Rear Row No. 1 Seats	Split One-Touch with Slide		
	Rear Row No. 2 Seats	Separate		
Seat Material		Fabric	Fabric High	
Headrests	Front	Driver and Passenger		
	Rear	o		
Front Seat Vertical Adjuster		Driver Only		
Seat Back Pockets		Driver and Front Passenger Seats		
Shift Lever and Knob		Urethane	Leather	
Parking Brake		Lever with Chrome Button		
Door Inside Handles		Chrome		
Power Windows		With (Driver Side Jam Protection)		
Room Lamps		Front (with Spot) and Rear		
Luggage Room Lamp		o		
Inside Rear View Mirror		Day & Night		
Assist Grips		o		
Sun Visors		Driver (Ticket Holder) and Passenger (Mirror & Lamp)		Driver and Passenger (Mirror & Lamp)
Door Trim		Fabric	Fabric High	
Door Armrests		Two Tone with Chrome		
Sunglasses Case		o		
Rear Console Box		o		
Accessory Connectors		Front	Front, Rear and Quarter	
Clearance Back Sonar		o		
Rear Camera		x	o	
Safety				
Anti-Theft System		Immobilizer with Alarm		
Anti-lock Braking System (ABS)		o		
Vehicle Stability Control (VSC)		o		
Emergency Signal System (ESS)		o		
Hill-start Assist Control (HAC)		o		
Seat Belts	Front Row	3-Point ELR with Pretensioner and Force Limiter		
	Rear Row No. 1	3-Point ELR x 3		
	Rear Row No. 2	3-Point ELR x 2		
Child Restraint System	ISOFIX + Top Tether Anchor	o		
Airbag System		6 (Driver & Front Passenger Airbags, Front Side Airbags and Curtain Shield Airbags)		
Seat Belt Warning	Driver + Front Passenger	Lamp and Buzzer		
	Rear Passengers	Lamp		
Brake Warning		With Buzzer		
Fuel Level Warning		o		
Door Ajar Warning		o		
Light Reminder Warning		o		
Key Reminder Warning		o		

o = Available x = Not Available
Indus Motor Company reserves the right to alter any details of specifications and equipment without notice. Vehicles shown and specifications mentioned herein may vary from models and equipment available.

*Terms and Conditions Apply



We Are Present Throughout The Nation

ABBOTTABAD
1. TOYOTA ABBOTT MOTORS PHONE: (0992) 406902
BAHAWALPUR
2. TOYOTA BAHAWALPUR MOTORS PHONE: (062) 2889941
D. G. KHAN
3. TOYOTA D. G. KHAN MOTORS UAN: (064) 111-222-737
D. I. KHAN
4. TOYOTA D.I. KHAN MOTORS PHONE: (0966) 716792-3
FAISALABAD
5. TOYOTA FAISALABAD MOTORS UAN: (041) 111-000-052
6. TOYOTA LYALLPUR MOTORS UAN: (041) 111-000-856
GUJRANWALA
7. TOYOTA GUJRANWALA MOTORS UAN: (055) 111-000-183
HYDERABAD
8. TOYOTA HYDERABAD MOTORS UAN: (022) 111-555-121
9. TOYOTA POINT MOTORS UAN: (022) 111-000-876
ISLAMABAD
10. TOYOTA CAPITAL MOTORS UAN: (051) 111-142-142
11. TOYOTA G.T. MOTORS PHONE: (051) 2227860-4
12. TOYOTA ISLAMABAD MOTORS UAN: (051) 111-000-037
KARACHI
13. TOYOTA CENTRAL MOTORS UAN: (021) 111-786-122

KARACHI
14. TOYOTA CLIFTON MOTORS UAN: (021) 111-800-777 PHONE: (021) 35302501-6
15. TOYOTA CREEK MOTORS PHONE: (021) 35092211-5
16. TOYOTA DEFENCE MOTORS UAN: (021) 111-836-836
17. TOYOTA EASTERN MOTORS UAN: (021) 111-836-111
18. TOYOTA HIGHWAY MOTORS UAN: (021) 111-009-000
19. TOYOTA SHAHRAH-E-FAISAL MOTORS PHONE: (021) 34600519-20
20. TOYOTA SOCIETY MOTORS UAN: (021) 111-786-113
21. TOYOTA SOUTHERN MOTORS UAN: (021) 111-876-111
22. TOYOTA UNIVERSITY MOTORS UAN: (021) 111-886-111
23. TOYOTA WESTERN MOTORS UAN: (021) 111-800-786
LAHORE
24. TOYOTA AIRPORT MOTORS UAN: (042) 111-880-990
25. TOYOTA CANTT MOTORS UAN: (042) 111-828-628
26. TOYOTA GARDEN MOTORS UAN: (042) 111-595-959
27. TOYOTA HN MOTORS UAN: (042) 111-000-095
28. TOYOTA JINNAH MOTORS UAN: (042) 111-119-696
29. TOYOTA RAVI MOTORS UAN: (042) 111-700-900
30. TOYOTA SAHARA MOTORS UAN: (042) 111-383-838
31. TOYOTA SHAHEEN MOTORS UAN: (042) 111-300-700
32. TOYOTA TOWNSHIP MOTORS UAN: (042) 111-393-939
33. TOYOTA WALTON MOTORS UAN: (042) 111-008-009

MARDAN
34. TOYOTA MARDAN MOTORS PHONE: (0937) 873001-3
MIRPUR (AJK)
35. TOYOTA AZAD MOTORS PHONE: (05827) 432803
MULTAN
36. TOYOTA CITY MOTORS UAN: (061) 111-111-342
37. TOYOTA MULTAN MOTORS UAN: (061) 111-111-343
PESHAWAR
38. TOYOTA FRONTIER MOTORS UAN: (091) 111-235-236
39. TOYOTA KHYBER MOTORS PHONE: (091) 2586931-34
QUETTA
40. TOYOTA ZARGHOON MOTORS PHONE: (081) 2450444
RAHIM YAR KHAN
41. TOYOTA ROYAL MOTORS UAN: (068) 111-111-185
RAWALPINDI
42. TOYOTA RAWAL MOTORS PHONE: (051) 4917200-05
SARGODHA
43. TOYOTA SARGODHA MOTORS UAN: (048) 111-222-456
SIALKOT
44. TOYOTA SIALKOT CITY MOTORS PHONE: (052) 3308131-4
SAHIWAL
45. TOYOTA SAHIWAL MOTORS PHONE: (040) 4502345-6

Dealerships marked with T have T-Sure service available.

EVERY TOYOTA IS A SYMBOL OF OUR PROMISE FOR QUALITY

At Toyota, we believe that our customers always come first. That is why when you make the choice to own a Toyota, we ensure that it comes with the trust, support, and peace of mind that you deserve.

From 2 years or 50,000 km Mileage Warranty, Unparalleled Quality, Durability & Reliability (Q.D.R.), to maintenance and grooming, to an unmatched level of safety with GOA Body with reinforcements, ISOFIX Child Seat Anchors, Immobilizer, Toyota ensures that every journey is more secure and satisfying. It is this level of dedication that has made us Pakistan’s most loved and trusted vehicle!



*Terms and Conditions Apply



EXPLORE

AS VERSATILE AS YOU...